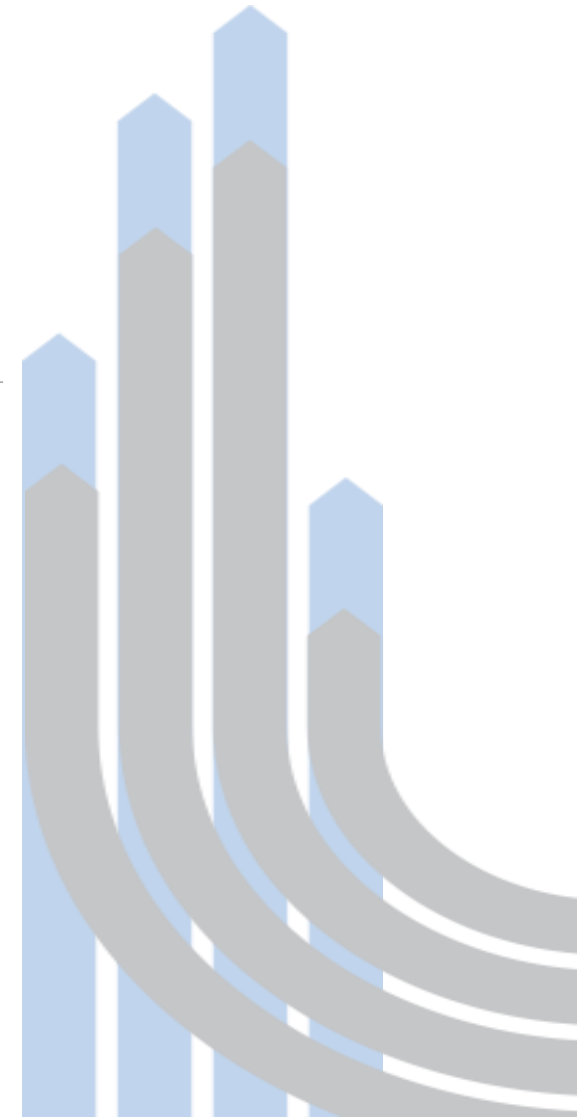


Wales Air Quality Forum

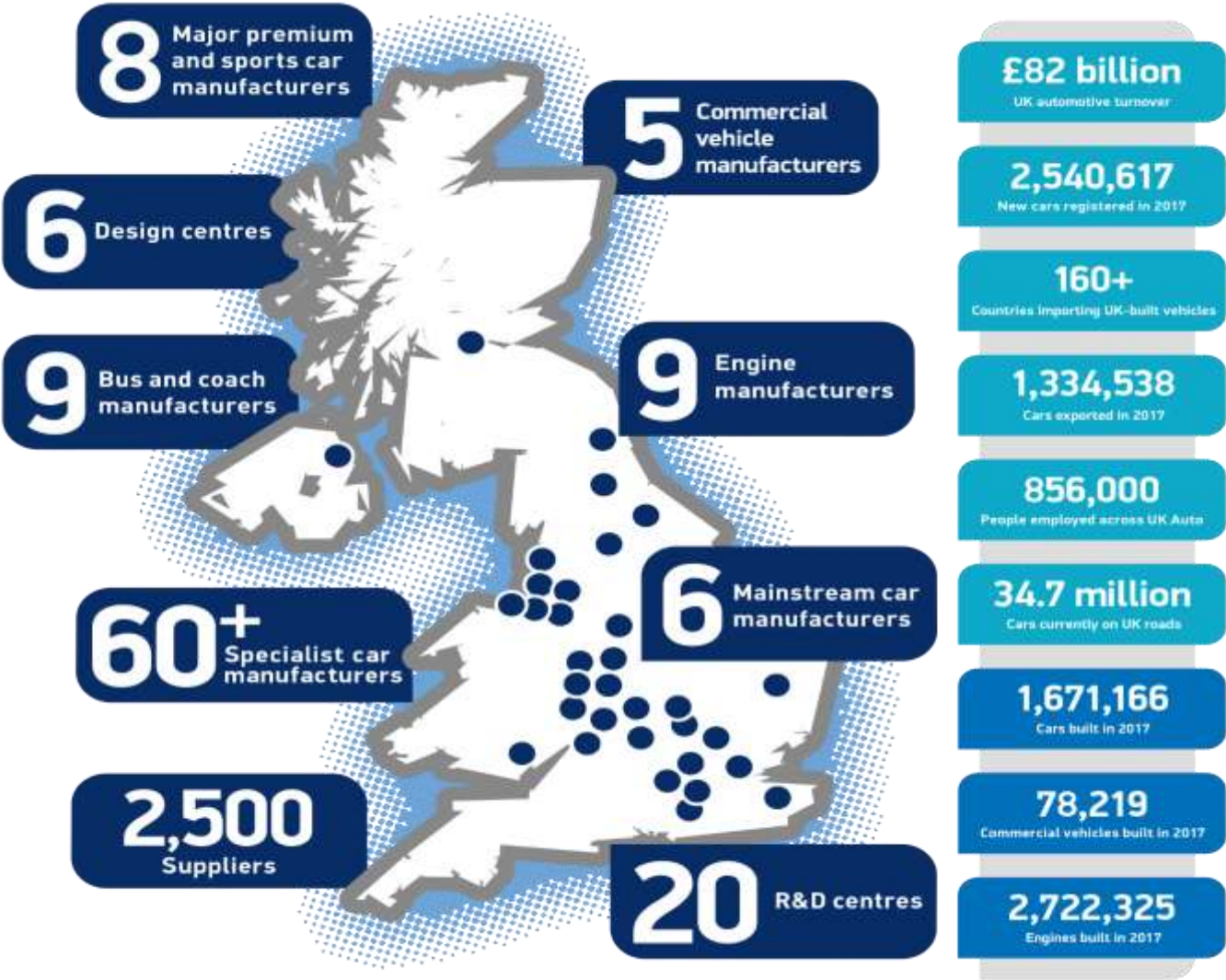
Trends and emissions from UK automotive

Sukky Choongh-Campbell

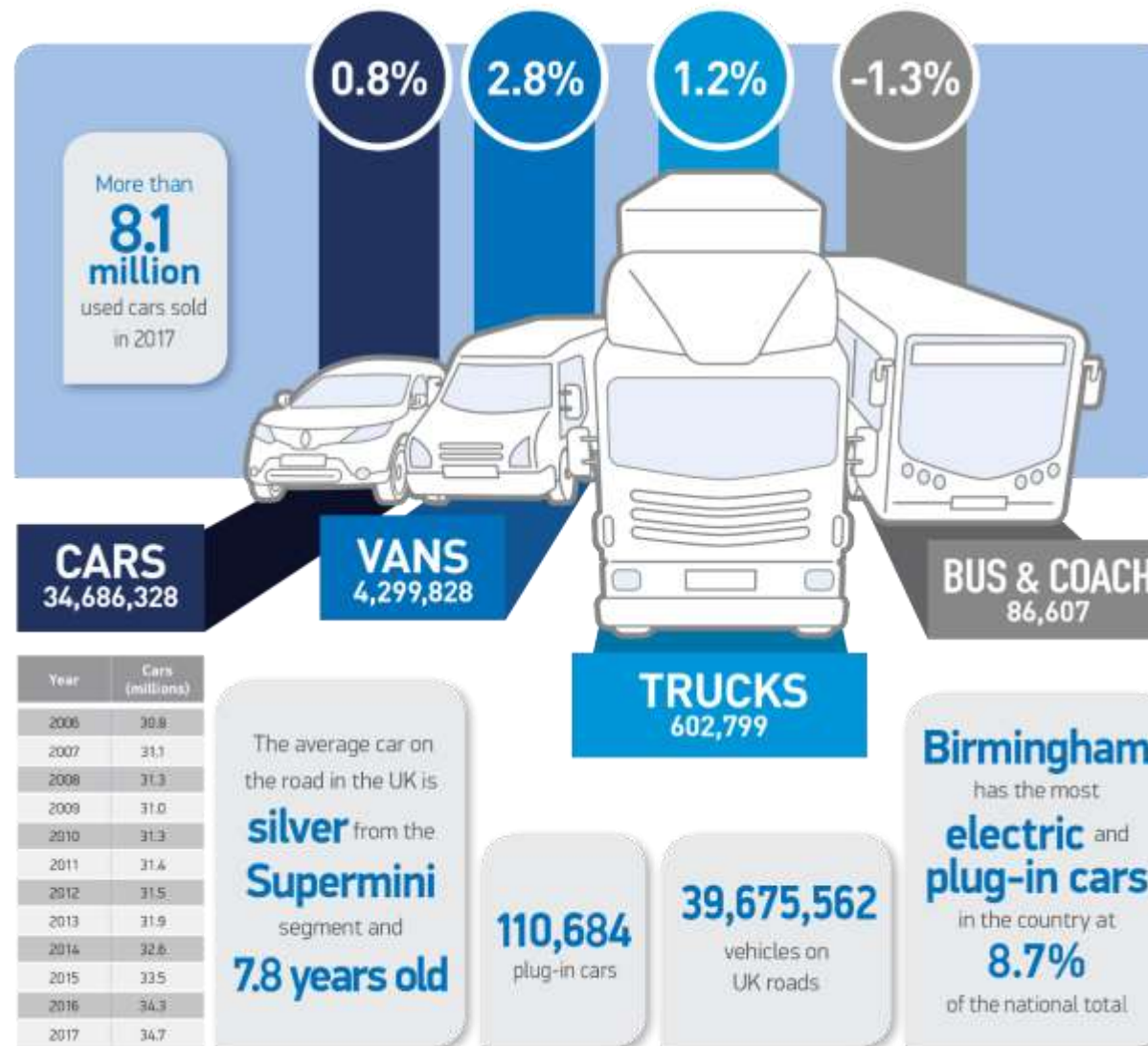
Environmental Manager, Air Quality and Ultra Low Emission Vehicles



Motor Industry Facts



Vehicles on the road in the UK

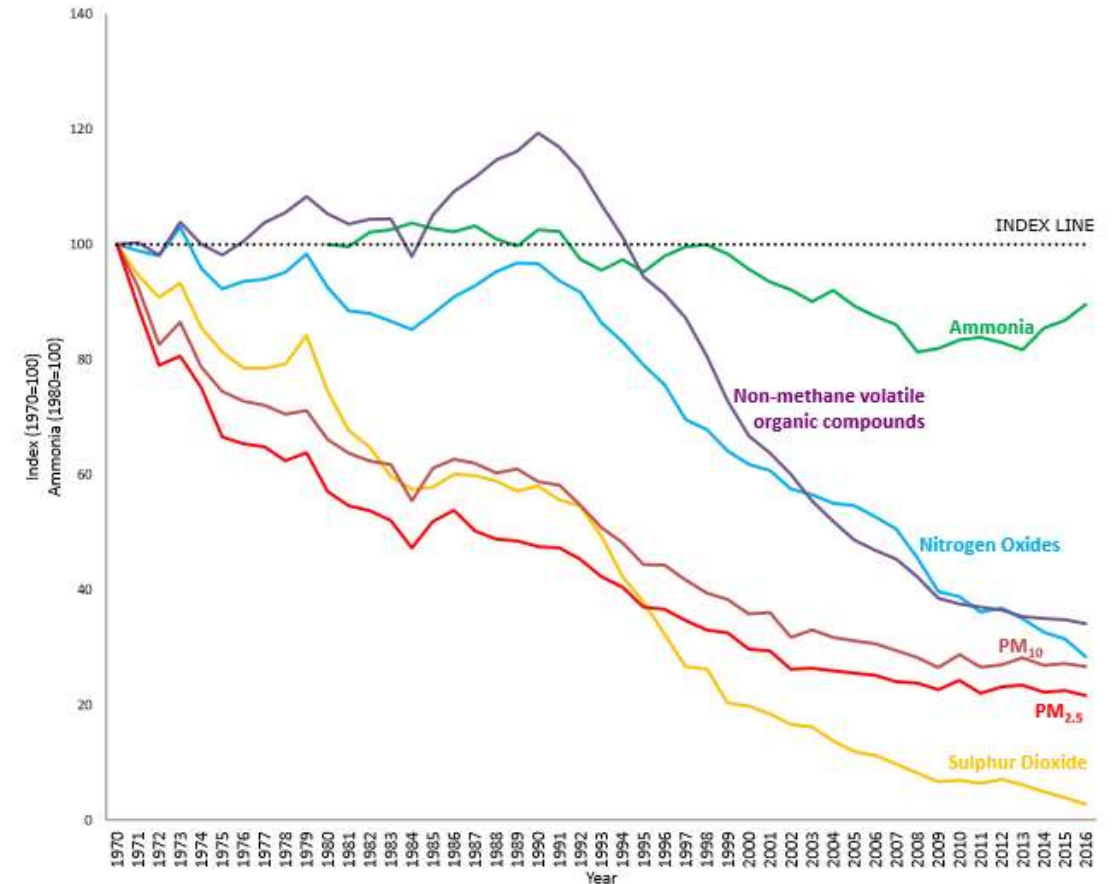


Emissions since 1970

- Increases in road traffic account for rise in NO_2 between 1984 and 1989
- Catalytic converters and regulation resulted in downward trend since 1990
- Transport still accounts for 32% of UK NO_x emissions. The rate of decline has slowed down due to the increase in diesel vehicles

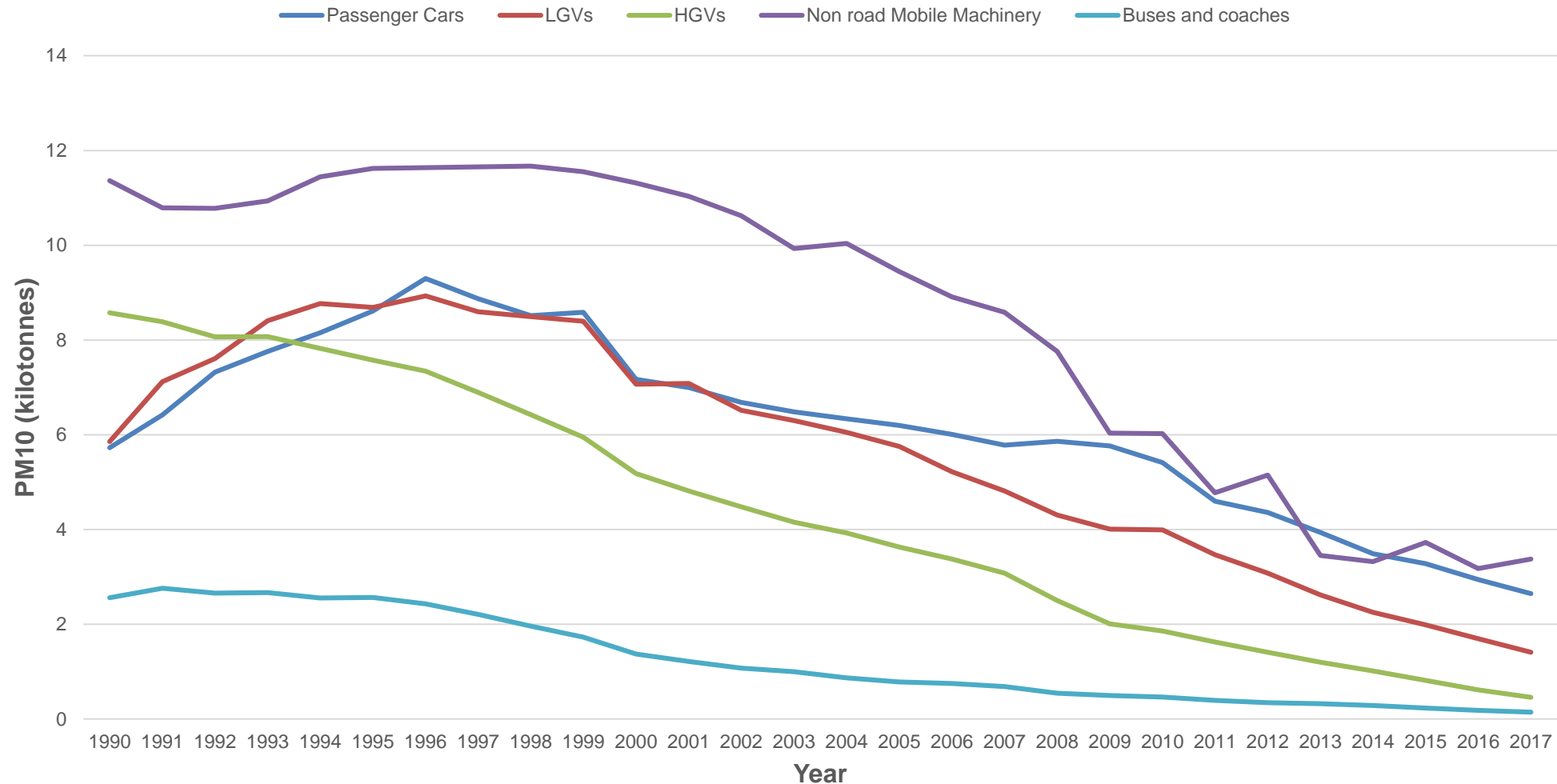
Defra National Statistics Release: Emissions of air pollutants in the UK, 1970 to 2016

Figure 1: Trends in UK sulphur dioxide, nitrogen oxides, non-methane volatile organic compounds, ammonia and particulate matter (PM_{10} , $\text{PM}_{2.5}$) emissions 1970 – 2016

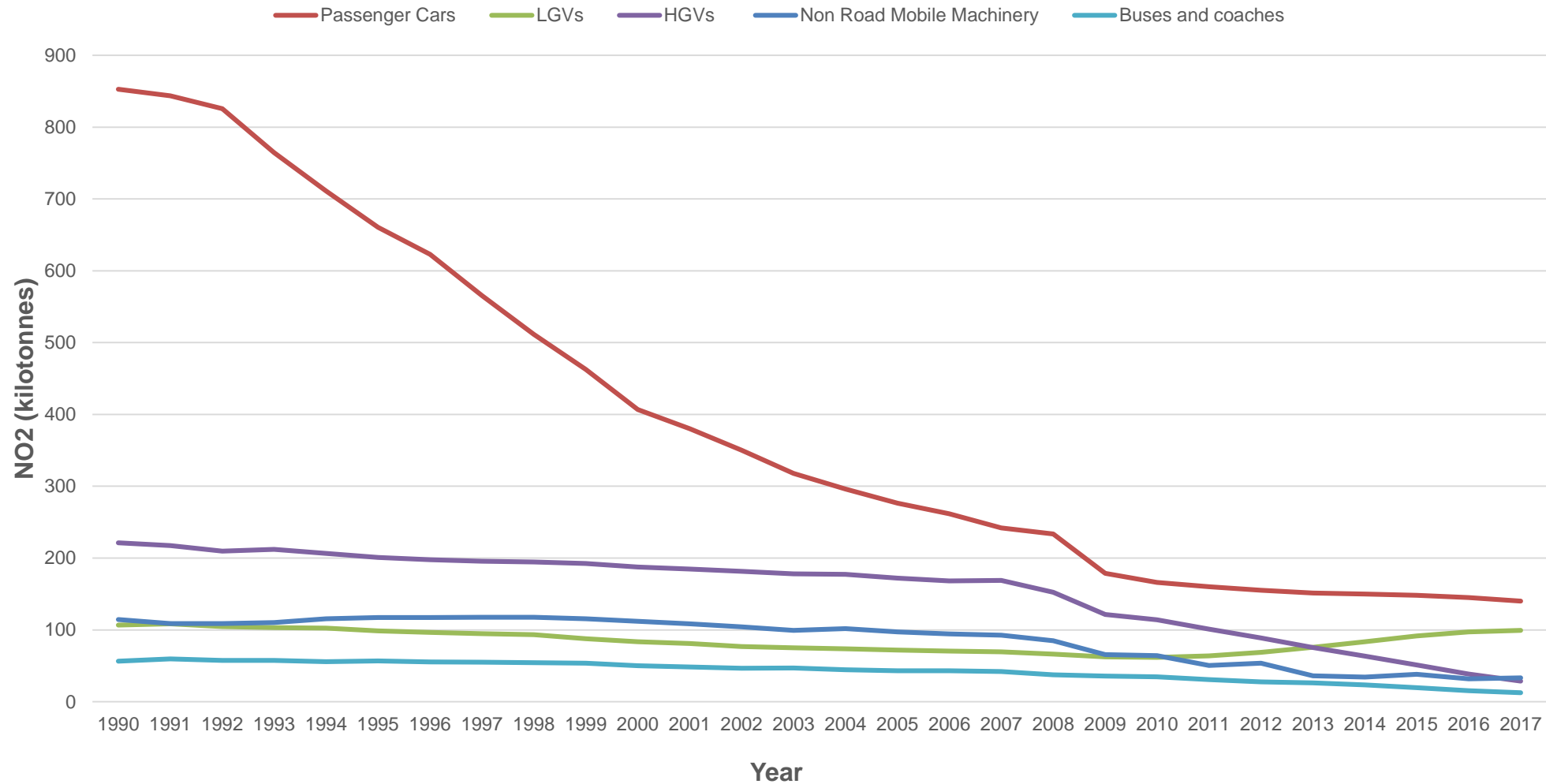


The index line is a comparator that shows the level of emissions if they had remained constant from the beginning of the time series.

Particulate Matter emissions 1990-2017



Nitrogen dioxide emissions 1990-2017

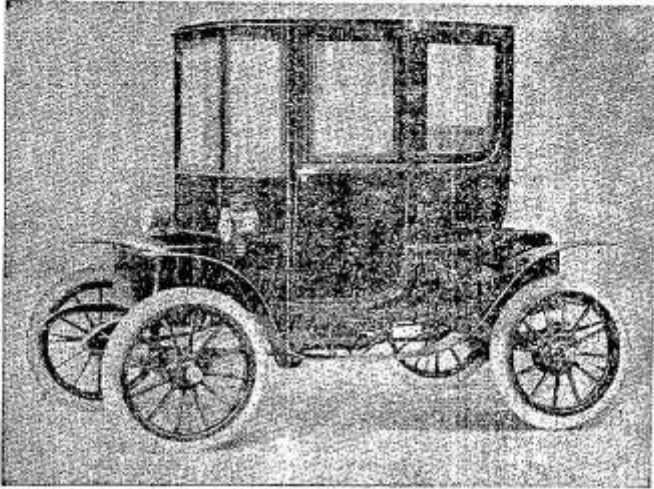


Megatrends Transforming Transport



BAKER ELECTRICS

The Aristocrats of Motordom
See This Handsome Car in Our Show Rooms



PRICE \$120000. EXTENSION COUPE, REVEL GEAR SHAFT DRIVE

An inside driven car with seating capacity for four passengers. The most luxurious and commodious car of its type. Painting—Black body; blue, green or maroon panels. Upholstering—Broadcloth or leather to match. Queen Victoria body interchangeable on this chassis. Price, \$130.

The Baker Electric is so well and favorably known, that any extended introduction, in presenting the new shaft drive models, would be superfluous.

The Baker has become the acknowledged Standard Electric of the World through a progressive development which scarcely finds a parallel in any other industry.

The First Electric

The first electric car built was a Baker. The foundation of the electric automobile industry was laid in the Baker factory, and the history of the industry since then has been practically the history of that factory.

Exclusive "Baker" Features

The Baker is to-day the only electric that has a heavy series wound motor of 300 per cent. overload capacity, with a commutator absolutely proof against sparking and burning under all conditions.

The Baker Motor Vehicle Co. is the oldest and largest manufacturer of electric motor cars in the world.

WILLIS MOTOR CAR CO.

Central New York Distributors

628 Montgomery Street

Bell 'Phone 877

OLDSMOBILE, SELDEN, OAKLAND, RELIANCE AND RAPID TRUCKS.



Evolution or Revolution?



SMMT
DRIVING THE
MOTOR INDUSTRY



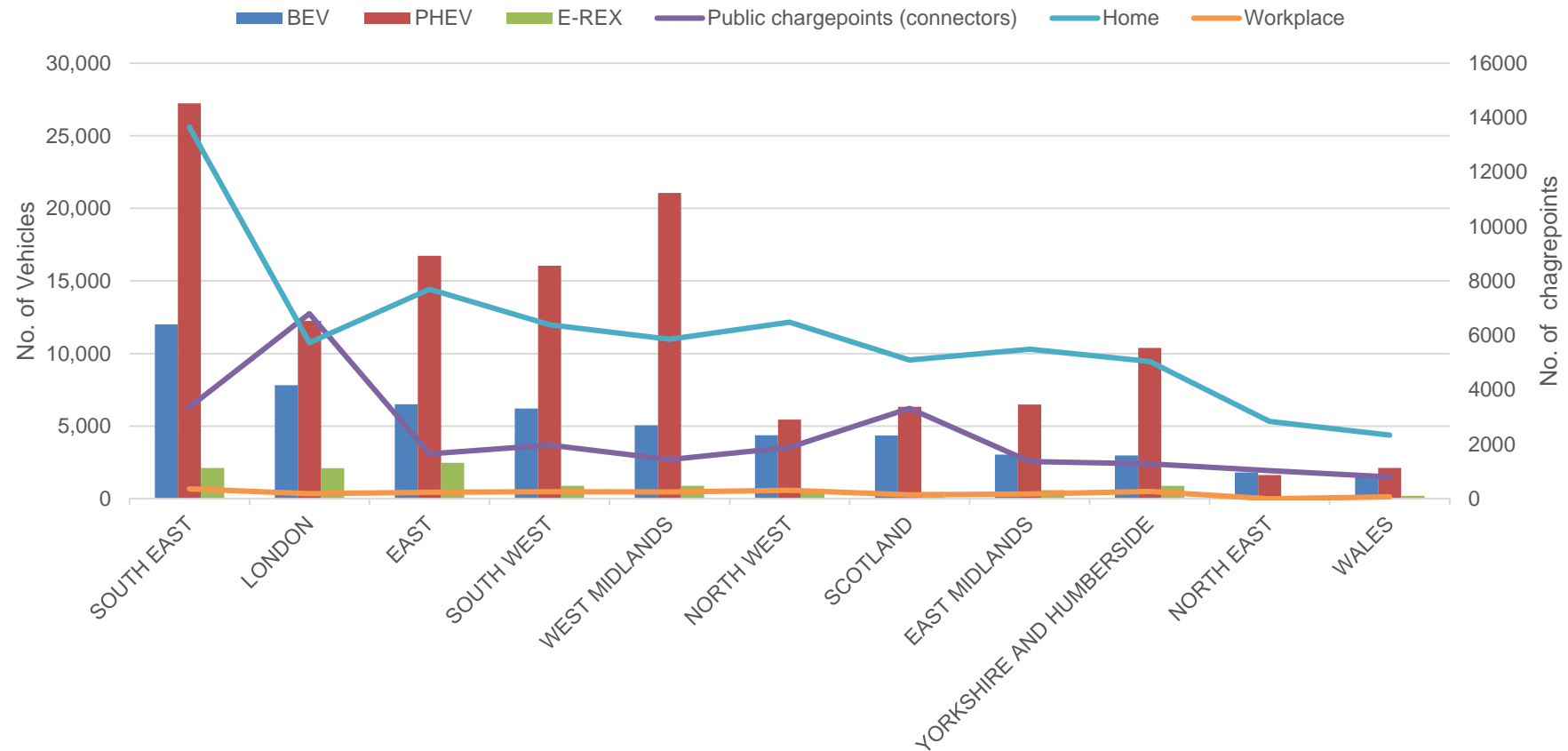
All Fuel Vehicle Registrations 1998 - 2018

All Fuel Vehicle Registrations 1998 - 2018



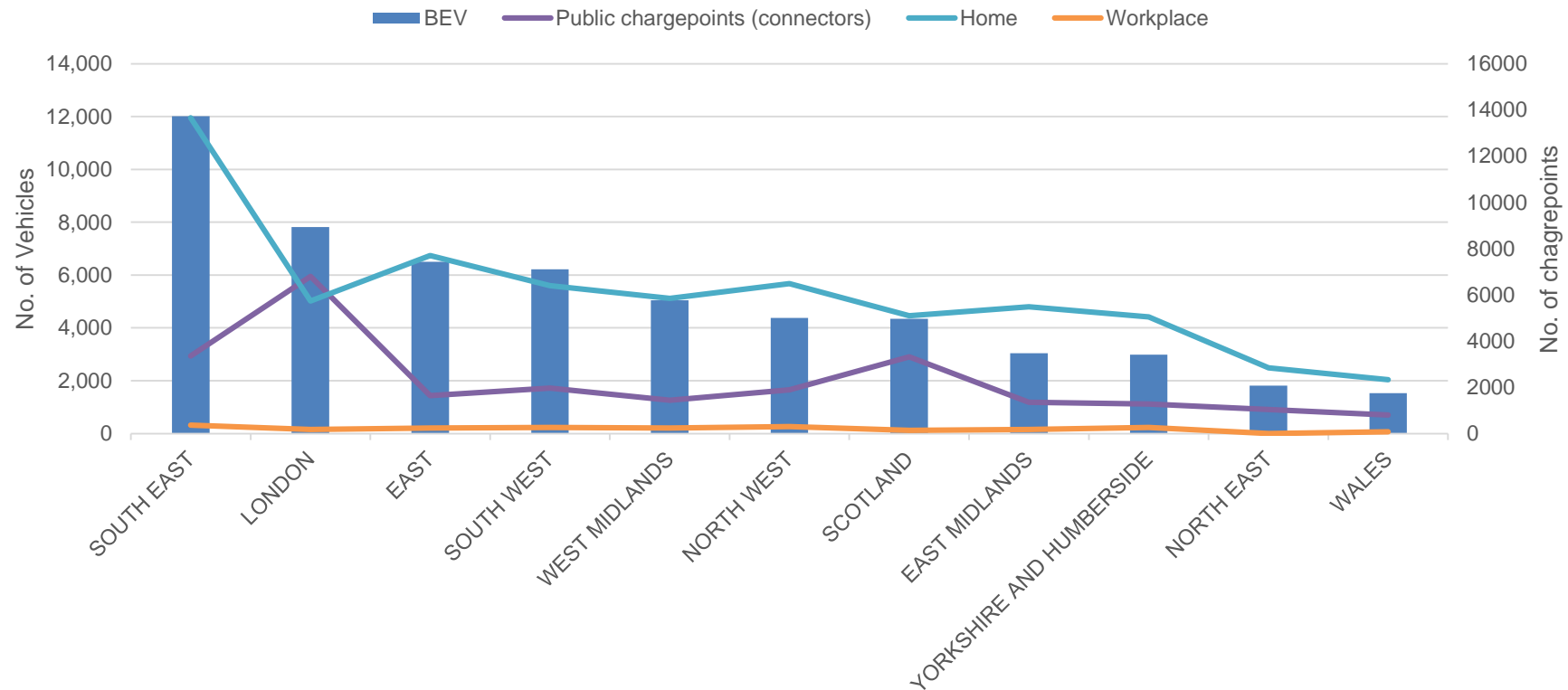
Alternative Fuelled Vehicles

Plug in vehicle parc by ONS economic region 2018



Charging Infrastructure

Plug in vehicle parc by ONS economic region 2018



Partnership

Go Ultra Low



Partnership

LEVC

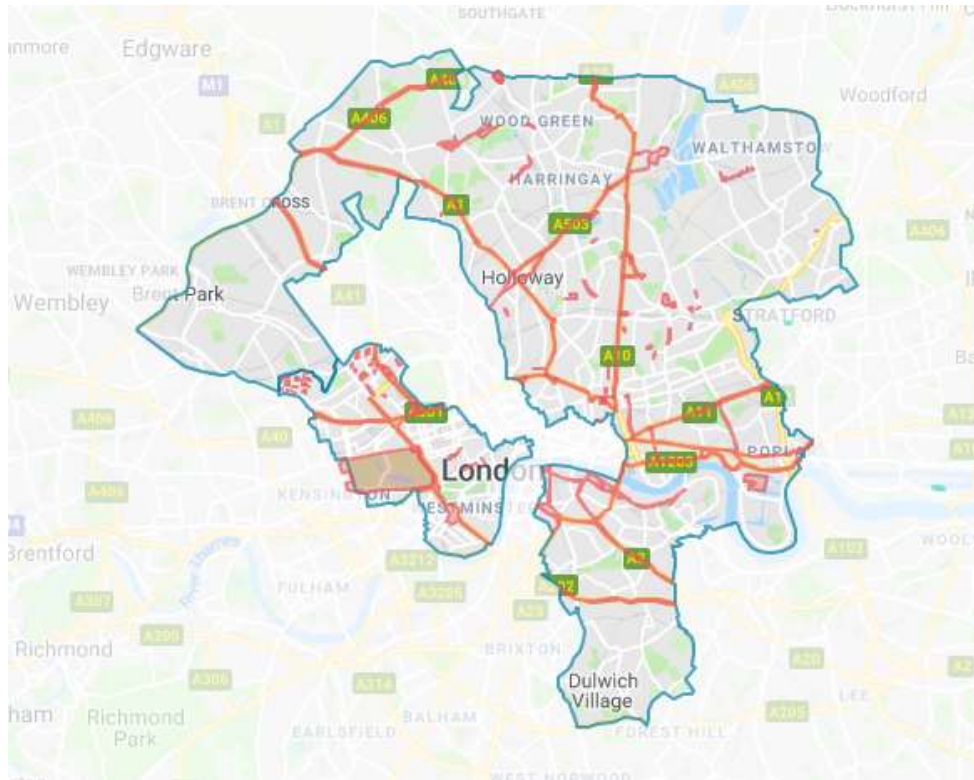
London policy

- £10,000 scrappage for old taxis
- ZEC taxi requirement for new cabs by January 2018
- LEVC taxi

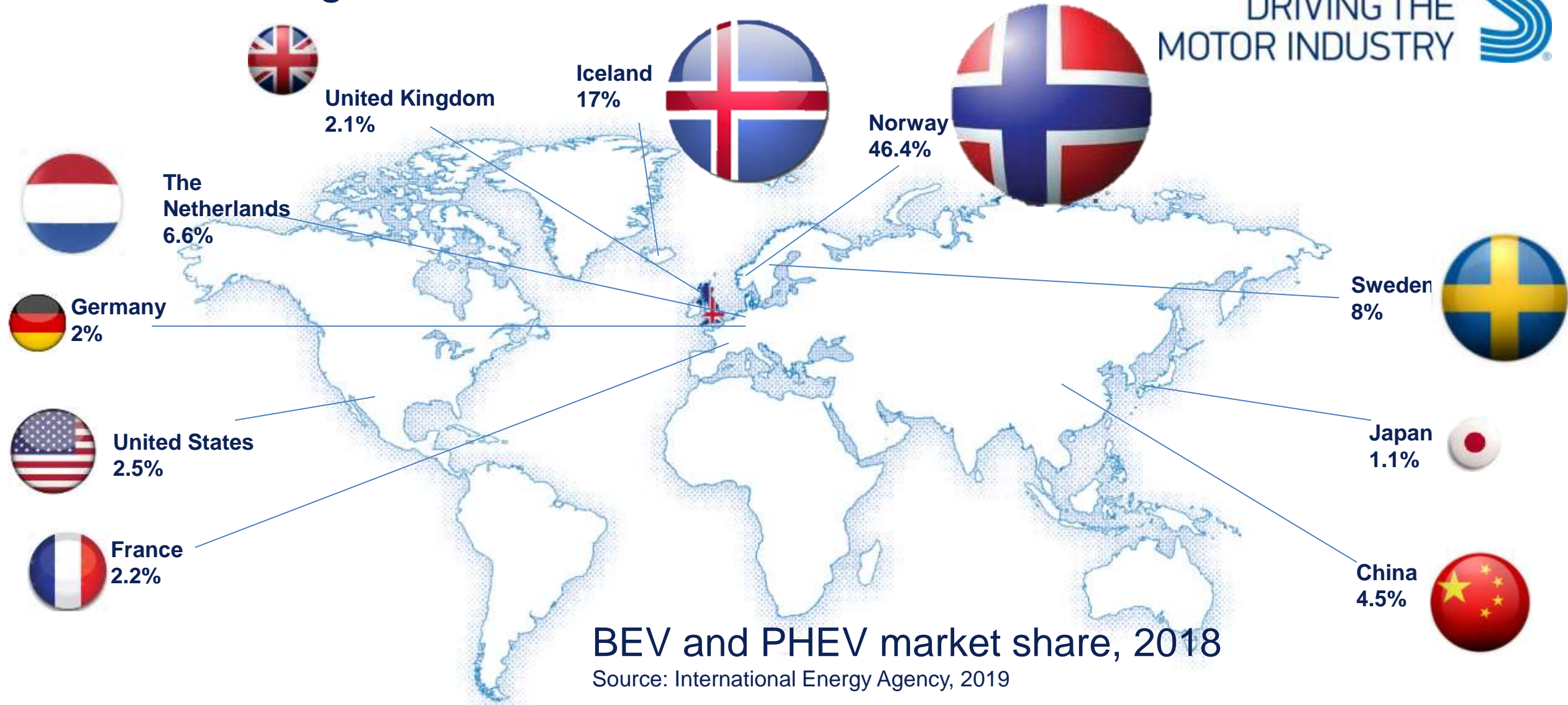


Partnership

ShareNow



Who is leading in alternatives? – a look at global markets



Convergence: a future of ACES



The new normal

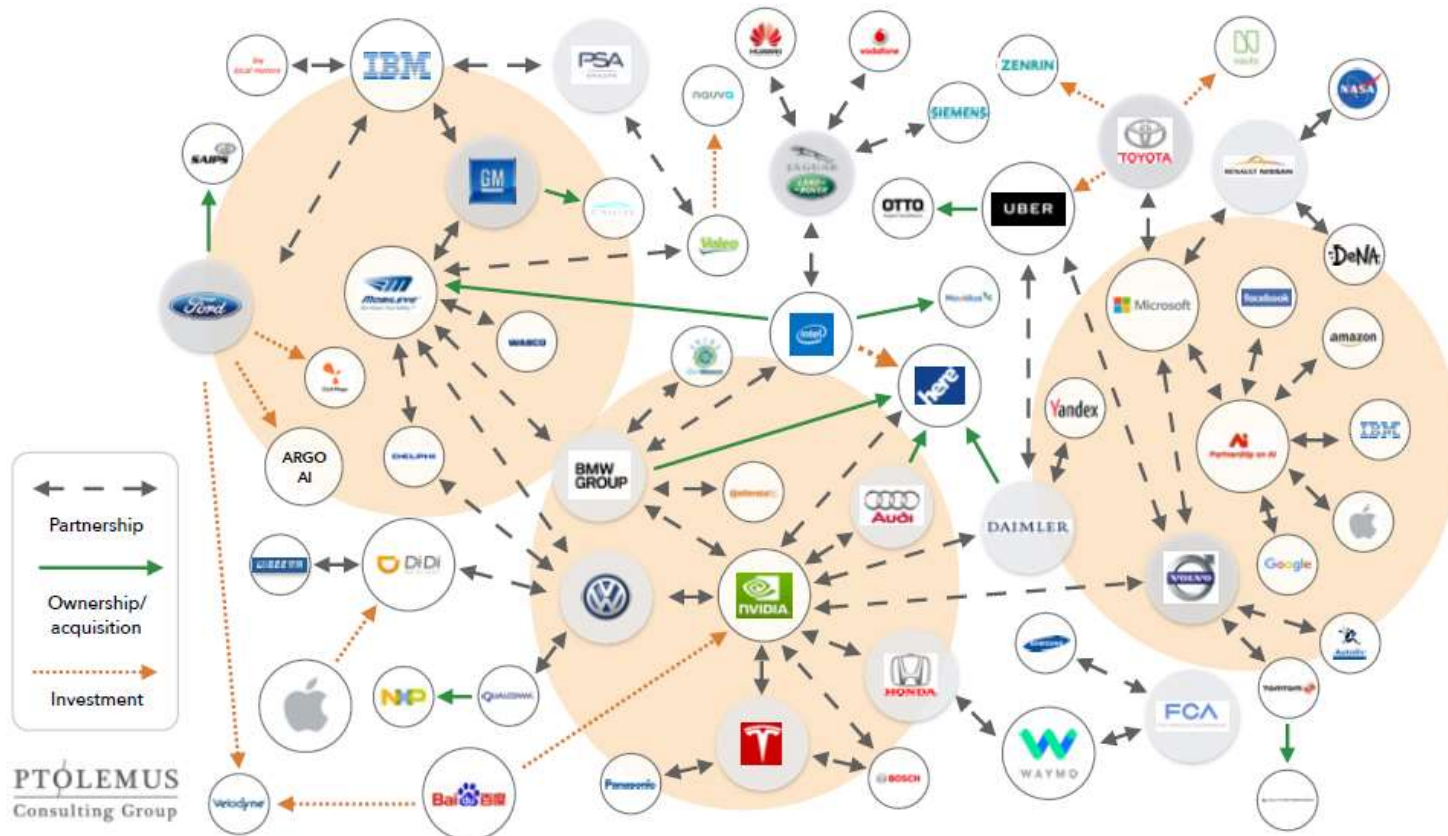


Illustration courtesy of PTOLEMUS

- The future is not merely about cars, but **mobility services and solutions**.
- Servitisation of products: new business models wrap around technologically advanced products.
- Vehicle manufacturers and major mobility innovators are already '**horizontalising**' and hedging their bets.
- In some ways, the future is already here – it's just not evenly distributed!

Thank you

The Society of Motor Manufacturers and Traders Limited

71 Great Peter Street, London SW1P 2BN

www.smmt.co.uk

SMMT, the 'S' symbol and the 'Driving the motor industry' brandline are registered trademarks of SMMT Ltd.

