

AECOM Noise and Air Quality Screening Tool

Matthew Muirhead, Duncan Urquhart



Roadside Screening Tool

Aligns air quality and noise at the strategic level, where the links are most viable.

- Uses strategic traffic flow data
- Identify high roadside noise levels and pollution concentrations
- Informs and prioritises further study
- Utilises existing data:
 - Emissions modelling
 - Population and health indices
 - GIS presentation tools

Welsh Government
Consultation Document

Noise and soundscape action plan 2018-2023

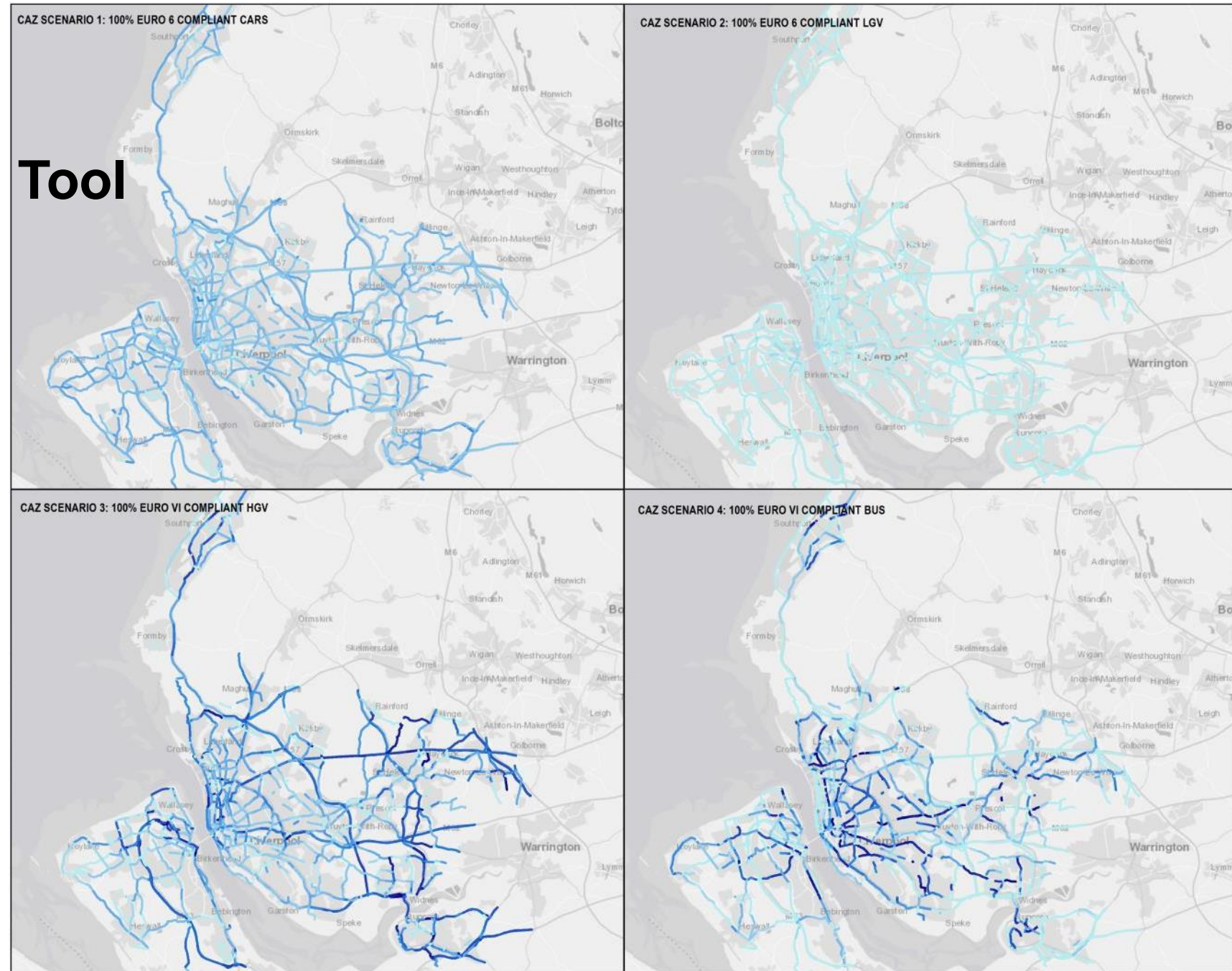
Date of issue: 11 July 2018
Action required: Responses by 3 October 2018

Mae'r ddogfen yma hefyd ar gael yn Gymraeg.
This document is also available in Welsh.

Roadside Screening Tool

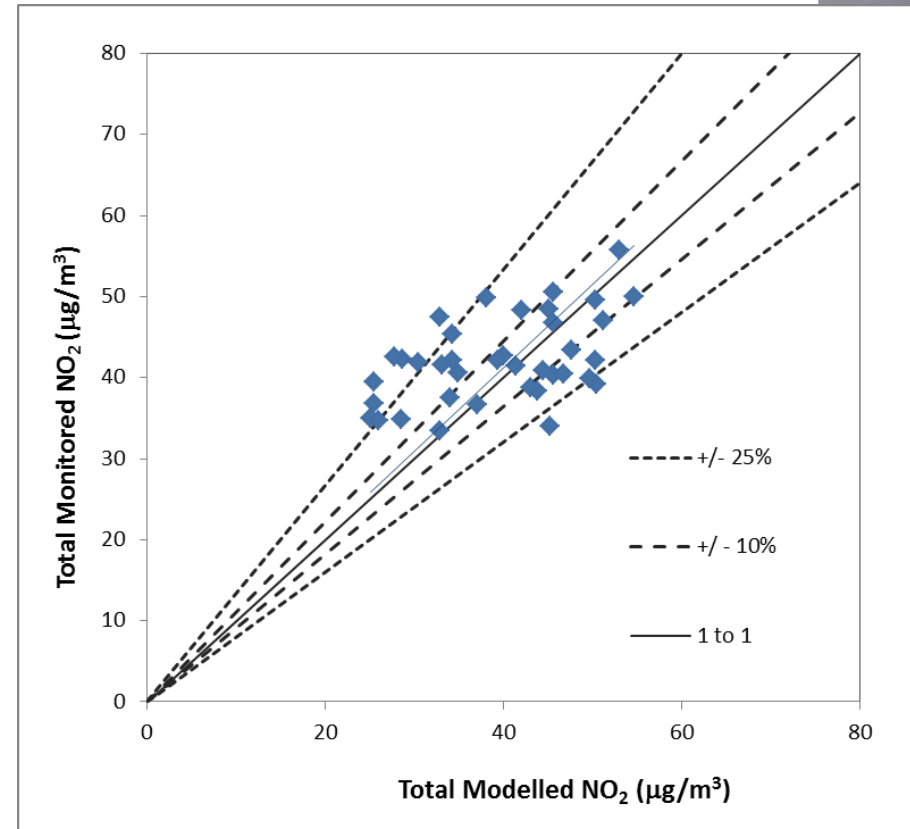
The tool will complement simple emissions models.

The outputs from large-scale source apportionment studies can be enhanced by sifting with simple commands and profiles.

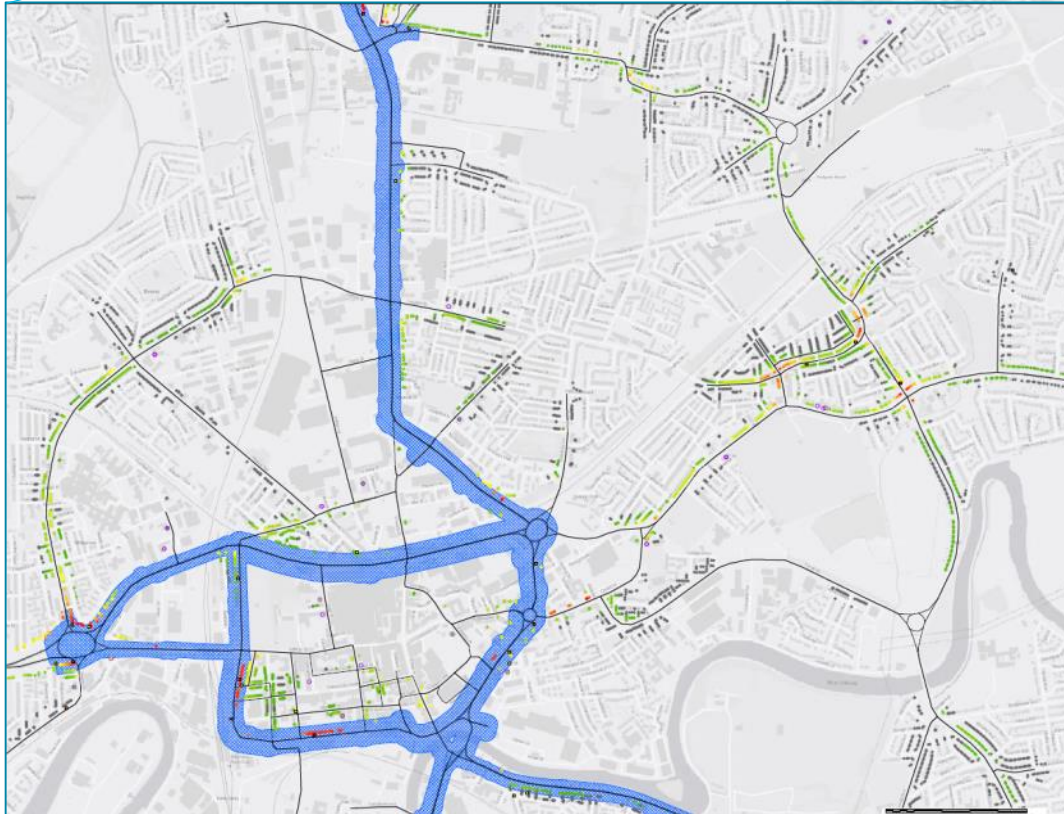


Model Verification

Verifies within
~20% at kerbside
monitoring
locations
Consistent with
LAQM.TG(16)
thresholds

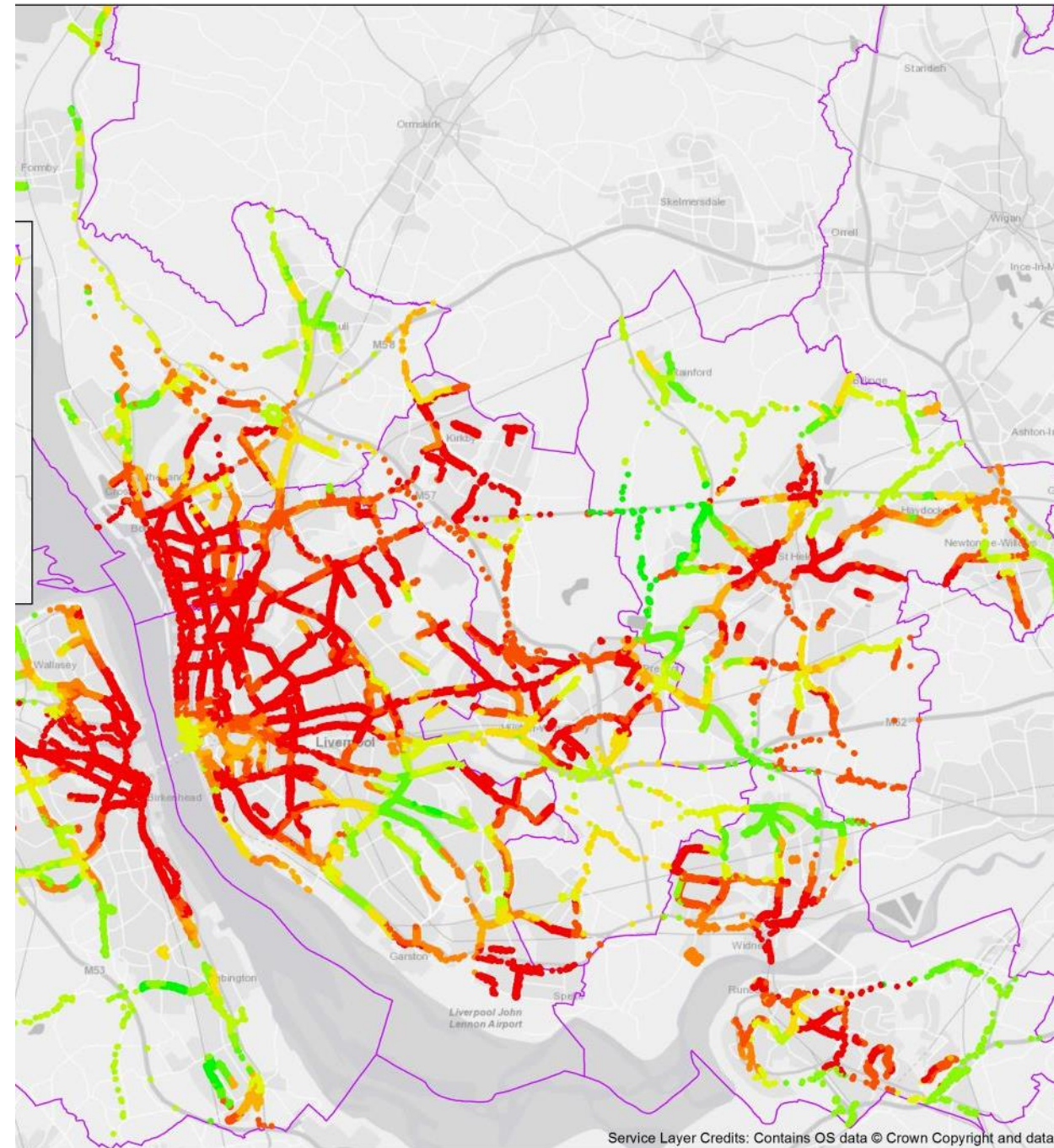


Informing Detailed Studies



1. Population data

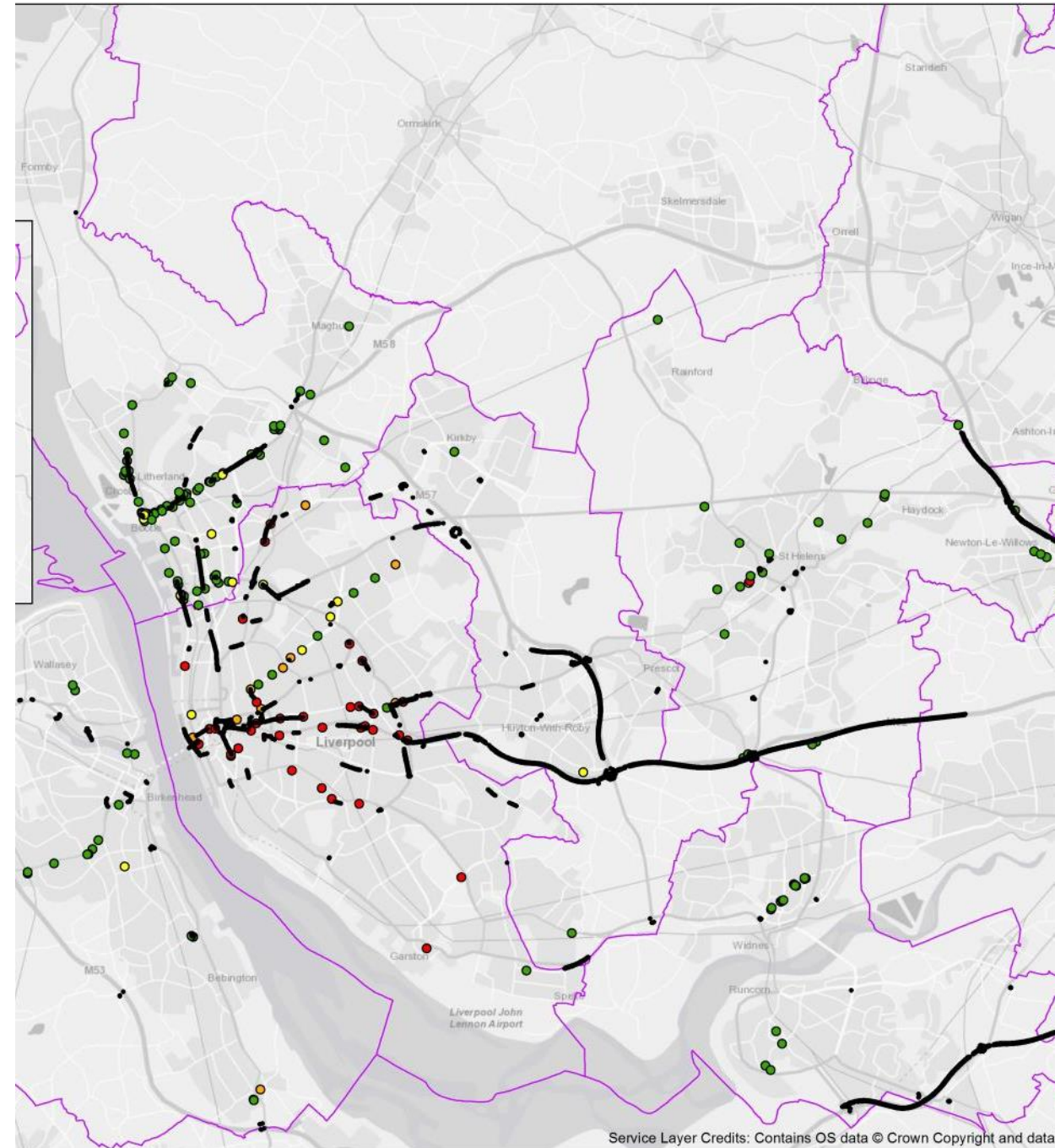
Indices of Multiple Deprivation (IMD) can be used with population data to identify sensitive locations near modelled links.



2. Roadside pollution

Road links with high roadside pollution concentrations are sifted.

Those links in proximity of properties can be identified.

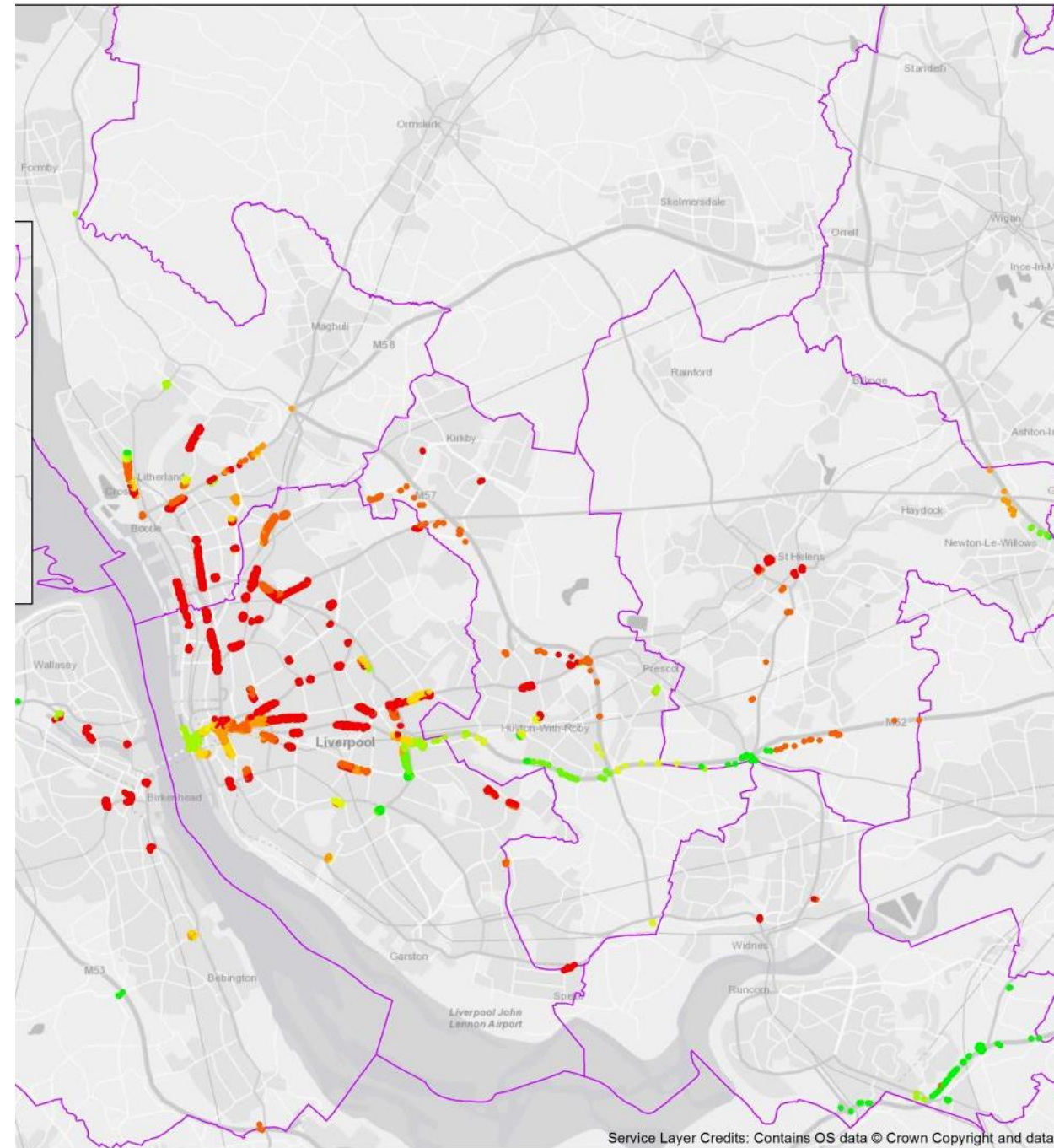


3. Impacted residents

Road links with high roadside pollution concentrations are sifted.

Those links in proximity of properties can be identified.

The properties adjacent to those links are sifted with reference to the IMD to prioritise the most significant roads for further Actions.



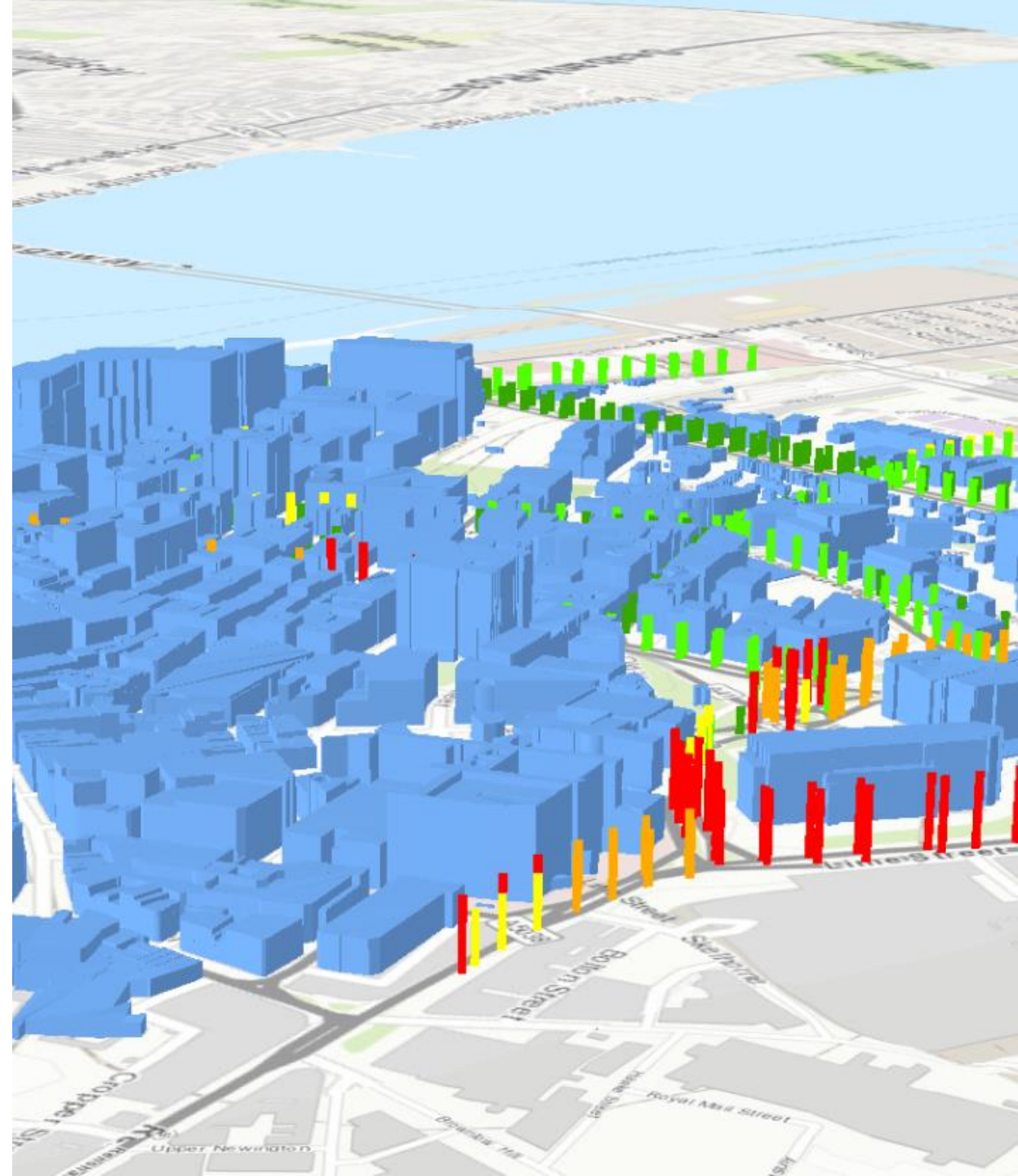
Noise

- Basic noise level (CRTN)
- Free-field, 10m from road edge
- 18hr (0600-2400) AAWT preferred but 24hr AADT will give an idea of trends
- Quick to produce
- Monitoring could help validate but CRTN is quite robust at such distances

Presentation and Visualisation

Enhances the value of novel use of existing tools and services to increase efficiency and speed:

- Georeferencing road networks
- Creating buffers and receptors
- Automating calculations for road gradients
- Automating identification of street canyons



Summary

The deliverables and opportunities for this may include:

- Prioritising areas for further assessment
- Indicating baseline conditions in the absence of further data
- Responding to client requirements with minimal cost / time implications
- The approach makes efficient use of existing data, such as regional Saturn models and population indices for LSOA

With regard to the Welsh guidance and linking noise and AQ:

- This is a high-level approach that supports further detailed work using recognized tools and methods
- It is more suited to strategic or regional assessment, and less-so for local assessment where the differences between AQ and noise are apparent.



Imagine it.
Delivered.