



Natural Resources Wales

Cyfoeth Naturiol Cymru

Mike Thomson
Incidents and Emergencies Team

Response to Air Quality Incidents in Wales



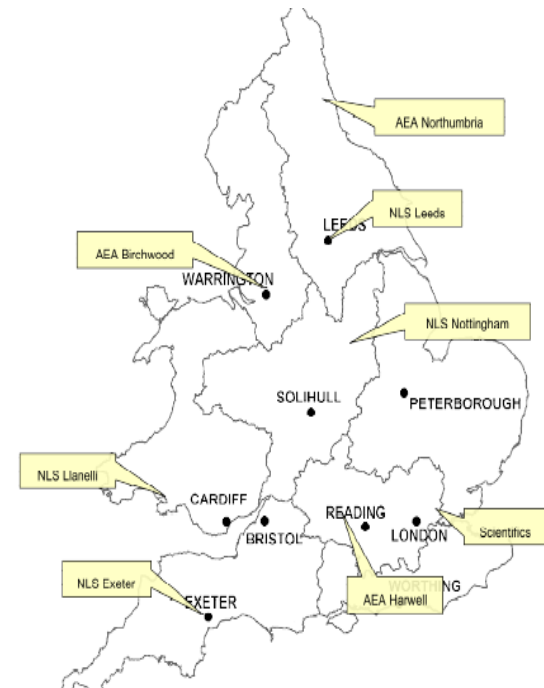
Why was the service set up?

- Buncefield Dec 2005;
- To help those managing the incident;
- To find out what is in the plume and where it's grounding;
- To ensure flow of public health and environmental advice to key groups during a major air quality incident.



EA AQiMI service

- Based on convening an Air Quality Cell to specifically consider the potential risk to public health of air borne pollutants from a major incident
- Framework contract for monitoring teams on standby across England and Wales



Notable Incidents in Wales

- Fforestfach tyre crumb fire
- Lewis's waste fire at Nant-y-Glo
- Able Skips in Newport



NRW Review

- Purpose of review
- Legal advice re NRW role



NRW Review – key outcomes

- NRW to continue to undertake current role and responsibilities in an air quality incident
- One monitoring team in Wales, based at Llanelli, covers first 72 hours of monitoring
- Service funded through a levy on regulated industry



Activating the Wales Air Quality Cell and/or monitoring

NRW, in consultation with PHW and PHE CRCE will consider convening an AQC and/or activating air quality monitoring if:

- a Multi-Agency Strategic (Gold) Co-ordination Group, a Tactical (Silver) Co-ordination Group or other multi-agency group has been (or may be) established and requests AQC support; or
- there is deemed to be significant potential risk to public health or the environment through exposure to pollutants released to air.

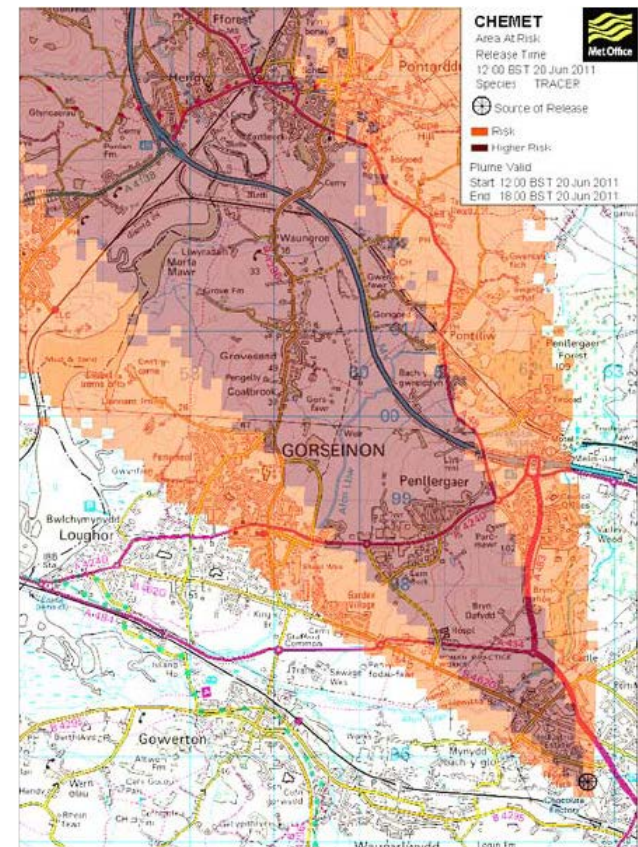
How AQC responds.....

- AQC – virtual group of NRW, PHW, PHE CRCE, MO, LA, HSL, FSA;
- co-ordinate, collect, collate and interpret local air quality data to inform action to protect public health and the environment;



How AQC responds.....

- Service is 24/7, principal partners all provide standby roles;
- Beyond crisis management phase - handover responsibility to the local authority /Recovery Co-ordination Group;
- We don't respond to the 'B, R and N' part of CBRN i.e. radiological, biological or nuclear incidents.



Air Quality Monitoring Team

- NRW Team based at Llanelli
- Standby 24/7;
- Deploy with portable equipment - monitor up to 25 different chemical species;
- Primary role is to collect ambient air quality data during the acute response phase of an incident, under the guidance / direction of the AQC;
- Funded to attend during response phase until incident moves into recovery, or for the first 72 hours, whichever comes first.

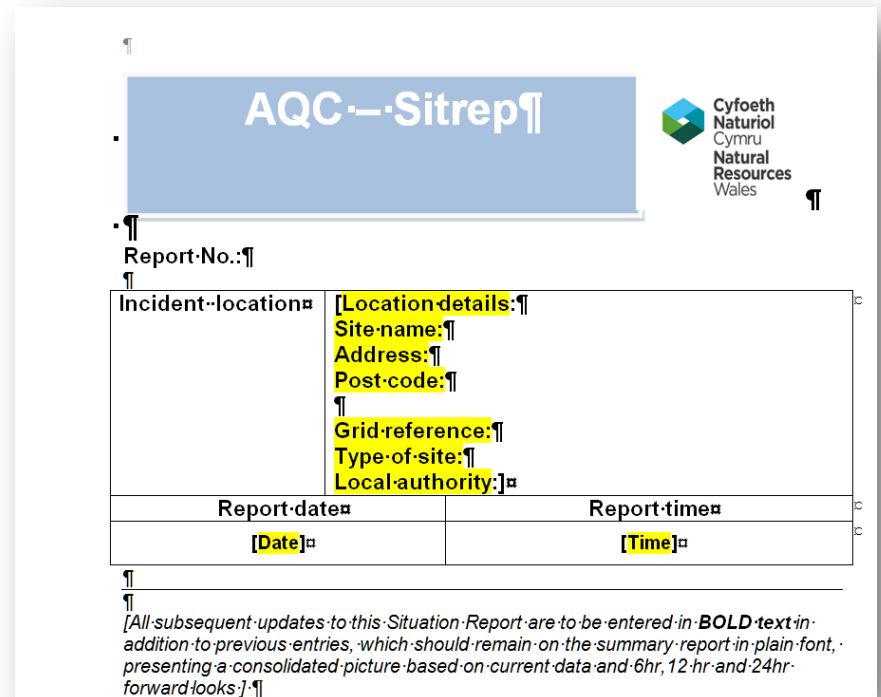
AQC day to day.....

- Battle Rhythm.....;
- Telecons, minutes, actions, incident log, sitreps, rotas.....;
- Quality assure, collate and interpret data.....;
- Co-ordinate air quality monitoring team.....



AQC output

- 'Translation' of air quality data into information and advice;
- Sitrep – situation report, an update on the air quality issues, compiled from all partners' inputs, includes forward look;
- PHW have primary responsibility on behalf of the AQC to deliver health protection advice.



The screenshot shows a form titled "AQC Sitrep" with the Cyfoeth Naturiol Cymru Natural Resources Wales logo in the top right corner. The form includes a "Report-No.:" field, an "Incident-location:" section with a table for location details, and a table for report date and time. Below the form, there is a note about bold text for subsequent updates.

AQC Sitrep	
Report-No.:	
Incident-location:	Location-details:
	Site-name:
	Address:
	Post-code:
	Grid-reference:
	Type-of-site:
Local-authority:	
Report-date:	Report-time:
[Date]	[Time]

[All subsequent updates to this Situation Report are to be entered in **BOLD text** in addition to previous entries, which should remain on the summary report in plain font, presenting a consolidated picture based on current data and 6hr, 12 hr and 24hr forward looks.]

Recent Incidents

- SiteServ, Llandow, two fires in November 2013 at waste site
- Atlantic Recycling, Rumney, waste fire 28 March 2014
- Incident reviews



Thank you for listening

